

vtech[®]

User's Manual

Lil' SmartTop™



© 2013 VTech
Printed in China
91-002816-002  

Dear Parent,

At **VTech**[®], we know how important the first day of school is for your child. To help prepare preschoolers for this important event, **VTech**[®] has developed the **Preschool Learning**[™] series of interactive toys.

Preschool Learning[™] features fun characters and inviting school themes that use technology to capture a child's attention and teach important preschool skills like spelling, counting and the alphabet. These vital skills are taught in a way that's both fun and highly engaging to maintain a child's interest. Children will also be introduced to fun school subjects such as art class, music class and even recess! With **Preschool Learning**[™], learning is fun from day one!

At **VTech**[®], we know that a child has the ability to do great things. That's why all of our electronic learning products are uniquely designed to develop a child's mind and allow them to learn to the best of their ability. We thank you for trusting **VTech**[®] with the important job of helping your child learn and grow!

Sincerely,

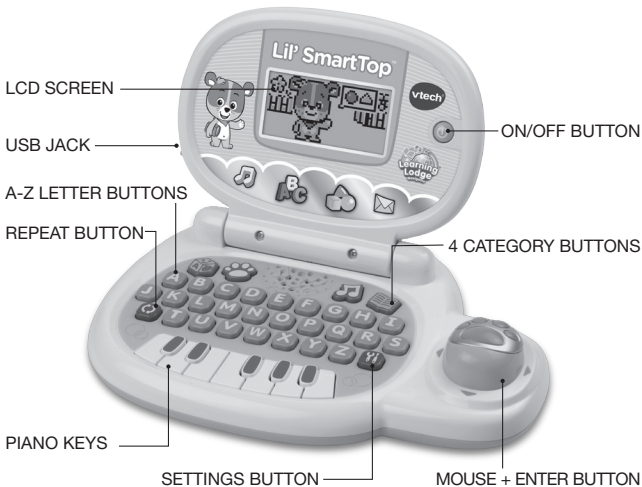
Your friends at **VTech**[®]

To learn more about **Preschool Learning**[™] series and other **VTech**[®] toys, visit www.vtechkids.com

INTRODUCTION

Thank you for purchasing the **VTech® Lil' SmartTop™**!

Play just like grown-ups with the **Lil' SmartTop™**! For added usability, it also connects to your computer for additional downloadable content such as sing-along songs, e-cards, animated stories, and additional picture dictionary packages. With an easy carry handle, this portable laptop provides hours of on-the-go fun!



INCLUDED IN THIS PACKAGE

- One **VTech® Lil' SmartTop™**
- One instruction manual

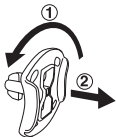
WARNING:

All packing materials, such as tape, plastic sheets, packaging locks and tags are not part of this toy, and should be discarded for your child's safety.

ATTENTION

Pour la sécurité de votre enfant, débarrassez-vous de tous les produits d'emballage tels que rubans adhésifs, feuilles de plastique, attaches et étiquettes. Ils ne font pas partie du jouet.

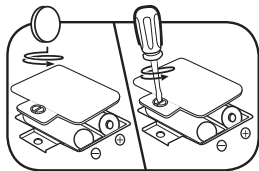
NOTE: Please keep the user's manual as it contains important information.

UNLOCK THE PACKAGING LOCKS:

- ① Rotate the packaging lock counter-clockwise 90 degrees.
- ② Pull out the packaging lock.

GETTING STARTED**BATTERY INSTALLATION**

1. Make sure the unit is **OFF**.
2. Locate the battery cover at the back of the unit.
3. Use a screwdriver or coin to open the battery cover.
4. Install 2 new AA Size (AM3/LR6) batteries following the diagram inside the battery box. (The use of new alkaline batteries is recommended for maximum performance.)
5. Replace the battery cover and tighten the screw to secure.



BATTERY NOTICE

- Use new alkaline batteries for maximum performance.
- Use only batteries of the same or equivalent type as recommended.
- Do not mix different types of batteries: alkaline, standard (carbon-zinc) or rechargeable (Ni-Cd, Ni-MH), or new and used batteries.
- Do not use damaged batteries.
- Insert batteries with the correct polarity.
- Do not short-circuit the battery terminals.
- Remove exhausted batteries from the toy.
- Remove batteries during long periods of non-use.
- Do not dispose of batteries in fire.
- Do not charge non-rechargeable batteries.
- Remove rechargeable batteries from the toy before charging (if removable).
- Rechargeable batteries are only to be charged under adult supervision.

PRODUCT FEATURES

1. ON/OFF BUTTON

Press this button to turn the unit **ON**.

Press it again to turn the unit **OFF**.

2. LETTERS & SHAPES BUTTON

Press this button to enter the menu for the LETTERS & SHAPES activities.

3. ADVENTURE FUN BUTTON

Press this button to enter the menu for the ADVENTURE FUN activities.

4. MUSIC FUN BUTTON

Press this button to enter the menu for the MUSIC FUN activities.

5. MESSAGES & STORIES BUTTON

Press this button to enter the menu for MESSAGES & STORIES activities.

6. MOUSE + ENTER BUTTON

Move the mouse left, right, forward and backward to scroll through menus and for exploring fun. Press the mouse button to confirm or perform an activity.



7. A-Z BUTTONS



Press these buttons to learn letter names and their sounds, answer questions or add in fun sounds.

8. PIANO KEYS



Press these buttons to play the piano.

9. SETTINGS BUTTON

Press this button to choose the volume setting, LCD contrast setting and background music on/off setting.

10. REPEAT BUTTON

Press this button to repeat the instruction or question.

11. USB JACK

Plug a USB cable into the **USB JACK** to connect to a computer for downloading. (USB cable not included)

TO BEGIN PLAY

1. Press the **ON/OFF** BUTTON to turn the unit on.
2. The unit will play a short animation and then enter the activity menu.
3. Use the mouse to scroll.

ACTIVITIES

LETTERS & SHAPES BUTTON

There are 3 activities in this category:

Activity 1: Picture Dictionary

In this activity, you can learn letters, letter sounds and words by pressing any of the 26 letter buttons.



Connect to the **VTech® Learning Lodge™** to download new words.

Activity 2: Hide & Seek Letters

There is a letter inside a dark cave. You can see part of the letter by using a flashlight. Look closely and guess the letter by pressing what you think is the correct letter button.



Activity 3: Shape Learner

Use the mouse to go on a walk through the garden and discover different shapes.



ADVENTURE FUN BUTTON

There are 2 activities in this category:

Activity 4: Bring Bear Home

Come and help lead Cody the Smart Cub™ back home! Move Cody left and right to help him collect apples for more energy.



Activity 5: Adventure Fun

Help Cody collect the missing puzzle pieces to solve the puzzle. The puzzle is divided into four parts. Cody must go on an adventure to find all the puzzle pieces.



There are 3 missions within the adventure:

1. Letter Signs

There is a sign in the road with a missing letter. Press the correct letter button to complete the sign and earn a puzzle piece.

2. Music Giftbox

Let's find out what's inside the giftbox! Play the piano keys to open the giftbox and collect a puzzle piece.

3. Roadblock

Uh oh, the road is blocked! Use the mouse to jump over the obstacle and collect another puzzle piece.

MUSIC FUN BUTTON

There are 3 activities in this category:

Activity 6: Sing It

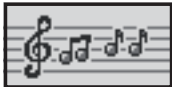
Sing-along songs play with an animation of Cody doing some dance moves. Press the A-Z letter buttons to add in some funny sounds.



Connect to the **VTech® Learning Lodge™** to download new songs.

Activity 7: Music Party

Pick a melody from the playlist, and you can then press the piano keys to play it or just listen to it. Press the A-Z letter buttons to add in some funny sounds.



Connect to the **VTech® Learning Lodge™** to download new melodies.

Activity 8: Musical Instruments

Move the mouse to the left or right to change instruments. Press the piano keys to play a song using the instrument you selected.



MESSAGES & STORIES BUTTON

There are 2 activities in this category:

Activity 9: Story Time

This activity allows you to watch and listen to animated stories.



You can also download new stories with 2 different levels from the **VTech® Learning Lodge™**.

If you have also downloaded your child's name, during Story Time your child's name will appear in the stories.

Activity 10: E-card Express

Press this button to receive and hear special e-cards from friends and family. A short animation and song will accompany the e-card.



You can connect to the **VTech® Learning Lodge™** and create personalized e-cards for your child that include his or her name, the name of the sender, and a special message.

INTERNET CONNECTIVITY FEATURES

MINIMUM SYSTEM REQUIREMENTS

PC Hardware Requirements:

CPU: Pentium® 4, 1 GHz or above

Memory: 256MB

Video Adaptor: Graphic card with 1024 x 768 at 16 or 32 bit color

Monitor Resolution: 1024 x 768

USB 1.1 or higher

300MB Hard disk space

Windows® compatible sound card and speakers

PC Software Requirements:

Microsoft® Windows® XP, Windows Vista®, Windows® 7 or Windows® 8 Operating System

Internet Explorer® version 6 or above

Adobe® Flash® Player 10 – Other Browsers Version (To acquire the latest version of Flash player, please visit www.adobe.com)

Macintosh Hardware Requirements:

Macintosh Computer with an Intel (1GHz or faster) processor

256 MB RAM (512 MB recommended)

300 MB Hard disk space

USB Port required

Macintosh Software Requirements:

Mac OS X version 10.5, 10.6, 10.7 or 10.8

Safari Internet Browser version 3.0 or later

Adobe® Flash® Player 10 – Other Browsers Version (To acquire the latest version of Flash player, please visit www.adobe.com)

* **Internet connection required for Internet enabled functions on both PC and Macintosh computers.**

Microsoft® and Windows® and Windows Vista® are either registered trademarks or trademarks of Microsoft Corporation in the United States and/or other countries. Adobe®, the Adobe logo, Flash® are either registered trademarks or trademarks of Adobe Systems Incorporated in the United States and/or other countries. Intel®, Pentium® are trademarks of Intel Corporation in the United States and other countries. Macintosh, Mac, Mac OS, and Safari are trademarks of Apple Inc., registered in the United States and other countries. All other trademarks are the property of their respective owners. THIS PRODUCT IS NOT ENDORSED OR SPONSORED BY ADOBE SYSTEMS INCORPORATED, PUBLISHER OF FLASH.

SOFTWARE INSTALLATION

Before you can connect the **Lil' SmartTop™** to your computer, you need to install the **VTech® Learning Lodge™** software on your computer. To obtain the **VTech® Learning Lodge™**, please go to the **VTech® Lil' SmartTop™** download site on <http://www.vtechkids.com/download> and download the setup file.

Once the setup process is complete, connect the **VTech® Lil' SmartTop™** to the computer using a USB cable. Locate the USB port on the left side of your product, and plug the device into your computer's USB port.

Note:

1. If the power supply is interrupted during the transfer of data to the **VTech® Lil' SmartTop™**, the data on the **VTech® Lil' SmartTop™** may be lost. Before connection, please check and make sure that your batteries are not running low on power.
2. Refrain from unplugging the USB cable during the transfer of data to the **VTech® Lil' SmartTop™**. This may cause the data to transfer abnormally or be lost.
3. If having problems with downloading any content, please reset the unit by pressing the **ON/OFF** button while holding the F + R buttons.

NOTE: This will delete all your downloads and require you to create a new user ID when connecting to the **VTech® Learning Lodge™**.

If the **VTech® Lil' SmartTop™** is connected properly, you will see this picture shown on the screen of your **VTech® Lil' SmartTop™**. You will be taken directly to the **VTech® Learning Lodge™** website, where you can enjoy all of the online features.



CARE & MAINTENANCE

1. Keep the unit clean by wiping it with a slightly damp cloth.
2. Keep the unit out of direct sunlight and away from any direct heat source.
3. Remove the batteries when the unit is not in use for an extended period of time.
4. Do not drop the unit on a hard surface and do not expose the unit to moisture or water.

TROUBLESHOOTING

If for some reason the program/activity stops working, please follow these steps:

1. Turn the unit **OFF**.
2. Interrupt the power supply by removing the batteries.
3. Let the unit stand for a few minutes, then replace the batteries.
4. Turn the unit **ON**. The unit should now be ready to play again.
5. If the product still does not work, replace with an entire set of new batteries.

TECHNICAL SUPPORT

If you have a problem that cannot be solved by using this manual, we encourage you to visit us online or contact our Consumer Services Department with any problems and/or suggestions that you might have. A support representative will be happy to assist you.

Before requesting support, please be ready to provide or include the information below:

- The name of your product or model number (the model number is typically located on the back or bottom of your product).
- The actual problem you are experiencing.
- The actions you took right before the problem started.

Internet: www.vtechkids.com

Phone: 1-800-521-2010 in the U.S. or 1-877-352-8697 in Canada

Company: VTech® Electronics North America, L.L.C.

Address: 1156 W. Shure Drive, Suite 200, Arlington Heights, IL 60004.

IMPORTANT NOTE:

Creating and developing Preschool Learning products is accompanied by a responsibility that we at **VTech**[®] take very seriously. We make every effort to ensure the accuracy of the information which forms the value of our products. However, errors sometimes can occur. It is important for you to know that we stand behind our products and encourage you to call our Consumer Services Department at 1-800-521-2010 in the U.S., or 1-877-352-8697 in Canada with any problems and/or suggestions that you might have. A service representative will be happy to help you.

NOTE:

This equipment has been tested and found to comply with the limits for a Class B digital device, pursuant to Part 15 of the FCC Rules. These limits are designed to provide reasonable protection against harmful interference in a residential installation. This equipment generates, uses and can radiate radio frequency energy and, if not installed and used in accordance with the instructions, may cause harmful interference to radio communications. However, there is no guarantee that interference will not occur in a particular installation.

If this equipment does cause harmful interference to radio or television reception, which can be determined by turning the equipment off and on, the user is encouraged to try to correct the interference by one or more of the following measures:

- Reorient or relocate the receiving antenna.
- Increase the separation between the equipment and receiver.
- Connect the equipment into an outlet on a circuit different from that to which the receiver is connected.
- Consult the dealer or an experienced radio/TV technician for help.

Caution : changes or modifications not expressly approved by the party responsible for compliance could void the user's authority to operate the equipment.

THIS DEVICE COMPLIES WITH PART 15 OF THE FCC RULES. OPERATION IS SUBJECT TO THE FOLLOWING TWO CONDITIONS: (1) THIS DEVICE MAY NOT CAUSE HARMFUL INTERFERENCE, AND (2) THIS DEVICE MUST ACCEPT ANY INTERFERENCE RECEIVED, INCLUDING INTERFERENCE THAT MAY CAUSE UNDESIRE OPERATION.